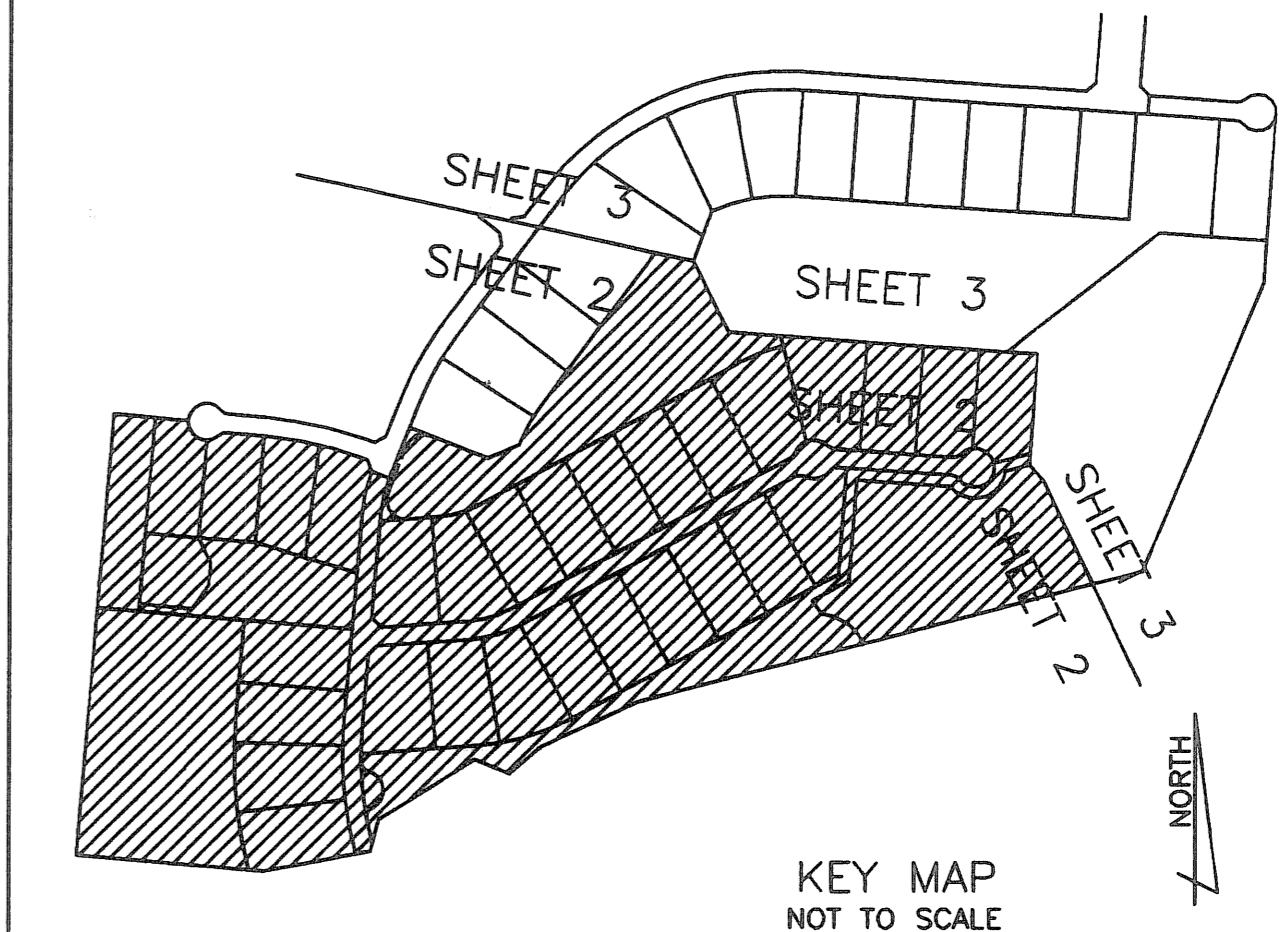
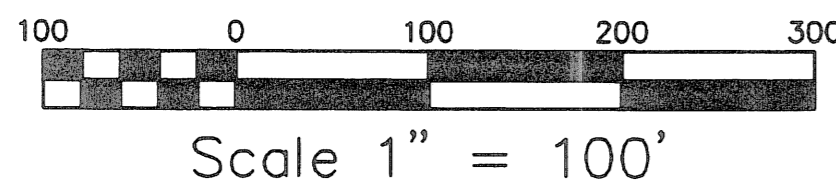
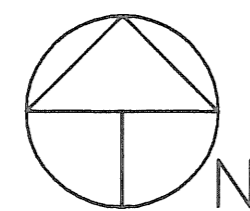


STONEWAL ESTATES P.U.D. PLAT No.3A

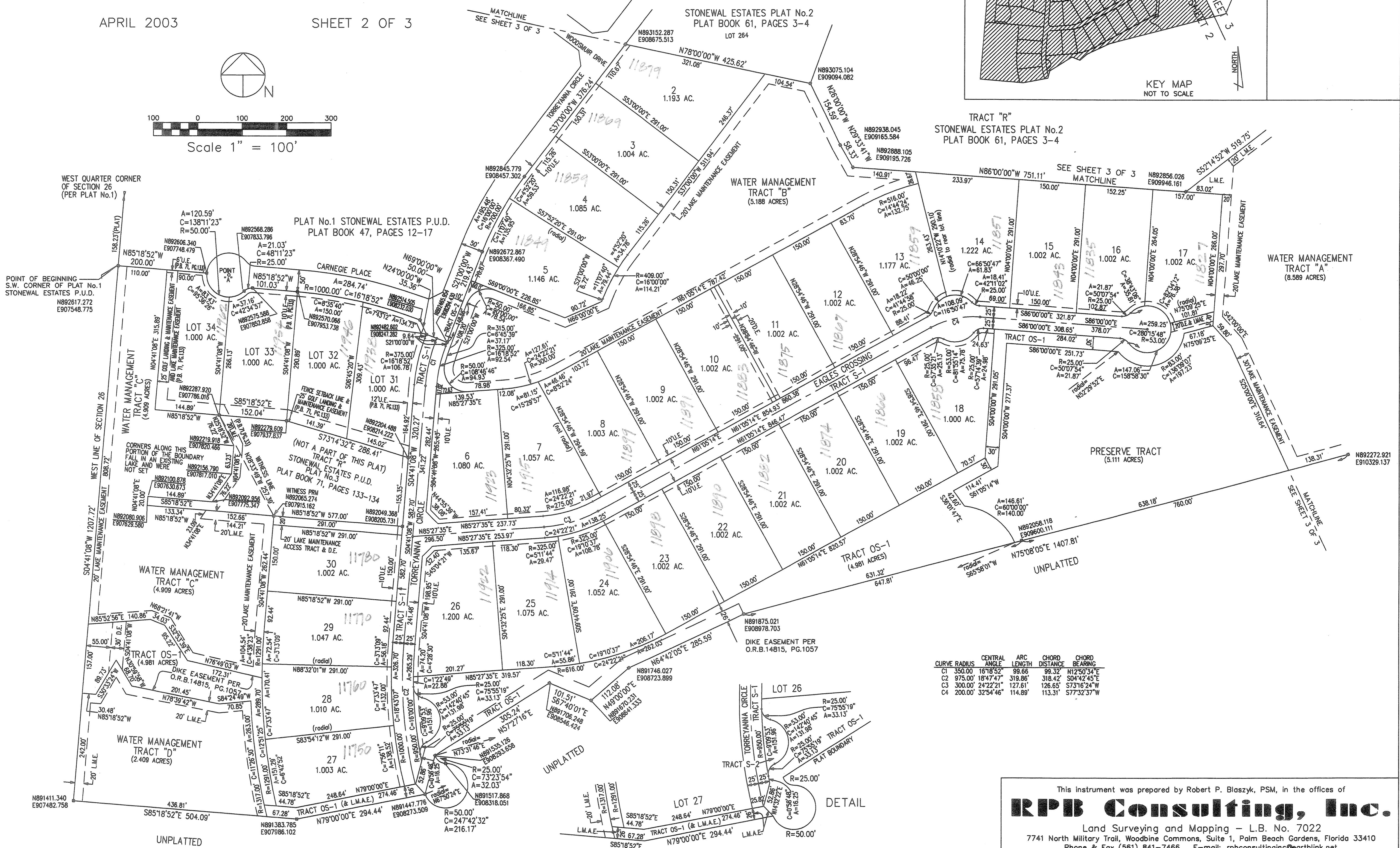
A PORTION OF SECTION 26, TOWNSHIP 42 SOUTH, RANGE 41 EAST, PALM BEACH COUNTY, FLORIDA, AND A REPLAT OF LOTS 1-4 AND THE WATER MANAGEMENT TRACTS OF STONEWAL ESTATES P.U.D. PLAT No.3, PLAT BOOK 71, PAGES 133 AND 134

APRIL 2003

SHEET 2 OF 3



58



CURVE RADIUS	CENTRAL ANGLE	ARC LENGTH	CHORD DISTANCE	CHORD BEARING
C1 350.00'	161°52'	98.66'	99.32'	N12°50'34"E
C2 975.00'	18°47'47"	319.86'	318.42'	S04°42'45"E
C3 300.00'	24°22'21"	127.61'	126.65'	S73°16'24"W
C4 200.00'	32°54'46"	114.89'	113.31'	S77°32'37"W

STONEWAL ESTATES P.U.D. PLAT No. 3A
 105
 58
 59
 826
 826

This instrument was prepared by Robert P. Blaszyk, PSM, in the offices of
RPB Consulting, Inc.
 Land Surveying and Mapping - L.B. No. 7022
 7741 North Military Trail, Woodbine Commons, Suite 1, Palm Beach Gardens, Florida 33410
 Phone & Fax (561) 841-7466 E-mail: rpbconsultinginc@earthlink.net